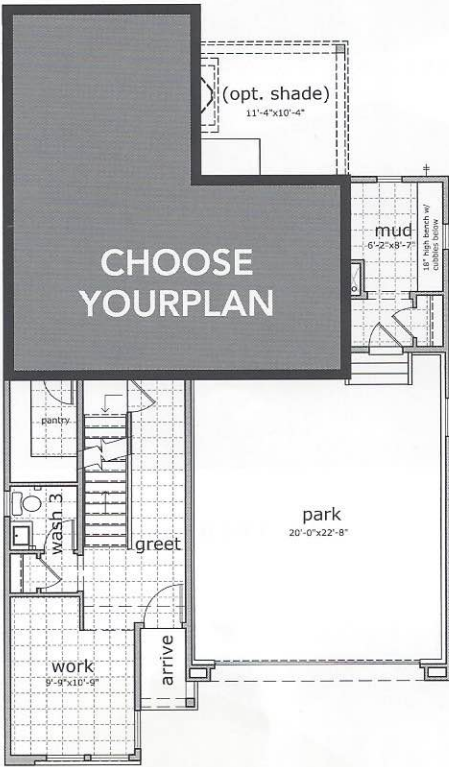


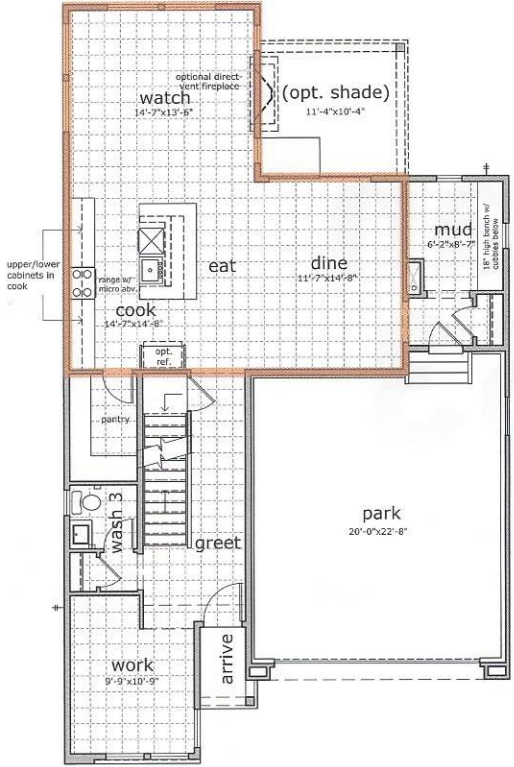
# Plan 353



You're the kind of person who likes an open floor plan and continuous space. There's always room to roam and room to entertain...now that's a "great room".



FIRST FLOOR



FIRST FLOOR – YOURPLAN ENTERTAINMENT

Main Floor	1,143 sq. ft.
Second Floor	1,232 sq. ft.
Total Std. Floor Area	2,375 sq. ft.
Unfinished Basement	951 sq. ft.
Park	503 sq. ft.



SECOND FLOOR

**YourPlan:  
Kitchen**

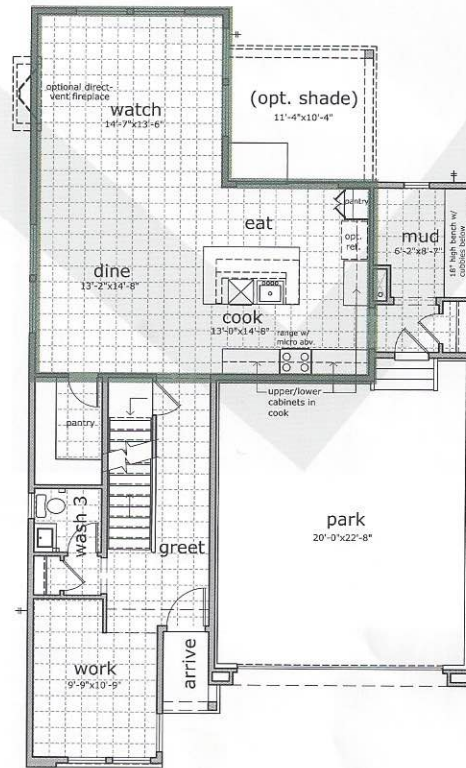
You like the idea of an expansive kitchen as the focal point of your new home. You know, that's where your family and friends love to hang out.



FIRST FLOOR – YOURPLAN KITCHEN

**YourPlan:  
Outdoor**

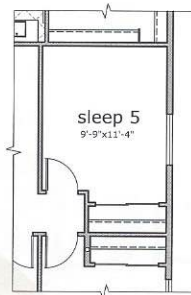
So, you like the idea of having your morning coffee along with some fresh air. Now, you can have both...without putting on your shoes.



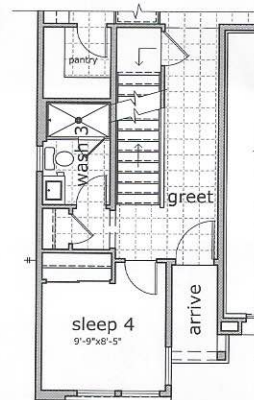
FIRST FLOOR – YOURPLAN OUTDOOR



SECOND FLOOR OPTION  
Optional stackable washer & dryer



SECOND FLOOR OPTION  
Optional sleep 5 ilo play



MAIN FLOOR OPTION  
Optional sleep 4 w/wash 3 ilo work

SEE BASEMENT PLAN ON BACK